

DURO[®]

**Water Conditioning
Products**

**DRINKING
WATER SYSTEMS**



1240 Series Reverse Osmosis Drinking Water Systems

DURO's advanced reverse osmosis drinking water systems are a natural and economical solution for providing your family with high quality drinking water. With a space-saving ultra slim profile, the system tucks neatly under your kitchen sink providing bottled water quality right from your very own tap.

With almost 2/3's of us not drinking enough water each day, having delicious water conveniently on hand can help keep you properly hydrated and feeling great. Cut down on sugary beverages and avoid symptoms of mild dehydration such as headaches, dry skin and daytime fatigue. Use for all your cooking needs. Perfect for coffee, tea and soups. All systems are backed by a **two year limited warranty**. The Smartap® water quality monitor found on the Push Button designated models is backed by a **five year limited warranty**.

All models feature:

- High quality reverse osmosis membrane
- Choice of 25, 50 and 75 gallons per day
- Sediment pre-filtration
- Pre & Post Carbon block filtration
- 3/8" tubing from RO to tank and faucet for higher flow
- Chrome faucet
- Simple snap fit cover for ease of service
- New slim profile with integrated mounting bracket for easy, space saving installation
- Quick connect fittings
- Color coded tubing for ease of installation
- Storage Tank

Choose a System Just Right for You

DURO is one of North America's largest suppliers of water treatment equipment. With over 40 years of experience, DURO has been the leader in reverse osmosis drinking water technology; designing and state of the art systems for residential and commercial applications. We offer a complete range of drinking water systems to fit your needs and your budget.

Series III - Premier Push Button Monitored Reverse Osmosis Systems

Our premier model is equipped with our patented Smartap® Push Button Monitor. At the touch of a button you can be assured that you are receiving top quality water or you will be alerted that it is time to change your membrane. This model also utilizes three dedicated sediment and carbon filters.



This model is tested and certified by WQA against NSF/ANSI 58 for the reduction of TDS. Tested and Certified by WQA against ORD0902 for "lead free" compliance



WQA Tested and Certified against CSA B483.1

Series II - Advanced Four-Stage Reverse Osmosis Systems

This model produces great tasting drinking water utilizing separate dedicated sediment and carbon pre-filters, allowing for longer run time between cartridge changes.

Series I - Standard Three-Stage Reverse Osmosis Systems

Series I utilizes a combination sediment/carbon pre-filter instead of dedicated sediment and carbon pre-filters. This system is great for installing in tight spaces or for those looking for the most economical solution.



Series III - Models 4VTFC75G-PB, 4VTFC50G-PB, 4VTFC25G-PB



Series II - Models 4VTFC75G, 4VTFC50G, 4VTFC25G



Series I - Model 3VTFC50G

1240 Series Reverse Osmosis Drinking Water Systems

1240 Series Models and System Configurations

Item Number	Model	Vessels	Sediment Filter	Pre-Filter	Membrane	Post-Filter	Output (GPD)*	Monitor
1240102-20	3VTFC50G	3	None	Dual-Purpose	Thin Film Composite	Activated Carbon	50	None
1240201-20	4VTFC25G	4	String Wound Polypropylene	Activated Carbon	Thin Film Composite	Activated Carbon	25	None
1240202-20	4VTFC50G	4	String Wound Polypropylene	Activated Carbon	Thin Film Composite	Activated Carbon	50	None
1240203-20	4VTFC75G	4	String Wound Polypropylene	Activated Carbon	Thin Film Composite	Activated Carbon	75	None
1240301-20	4VTFC25G-PB	4	String Wound Polypropylene	Activated Carbon	Thin Film Composite	Activated Carbon	25	Push Button
1240302-20	4VTFC50G-PB	4	String Wound Polypropylene	Activated Carbon	Thin Film Composite	Activated Carbon	50	Push Button
1240303-20	4VTFC75G-PB	4	String Wound Polypropylene	Activated Carbon	Thin Film Composite	Activated Carbon	75	Push Button

* These models are tested and certified by WQA against NSF/ANSI 58 for the reduction of TDS. Tested and Certified by WQA against ORD0902 for "lead free" compliance. WQA Tested and Certified against CSA B483.1

† Manufacturer's output specification only with inlet conditions of 345 kPa (50 psig), 25°C (77°F), going to atmosphere.

Conditions for Use

Source Water Supply Profile	Chemical Parameters	Max mg/L*
Community / Private	Chlorinated / Non-Chlorinated	Hardness (CaCO ₃)
Feed Water Pressure ¹	242 - 690 kPa (35-100 psig)	Iron (Fe)
Temperature	4° - 38°C (40° - 100°F)	Manganese (Mn)
pH Range	3.0 - 11.0	Hydrogen Sulfide (H ₂ S)
Maximum TDS Level	2000 mg/L	Residual Chlorine (Cl ₂)
Turbidity**	<1.0 NTU	** Nephelometric Turbidity Unit * mg/L = ppm
Maximum SDI***	<4.0	*** Silt Density Index: Value stated in SDI units.

Notes: • ¹ Pressure Regulator is recommended for feed water pressures exceeding 552 kPa (80 psig).

• The performance of a reverse osmosis membrane is highly dependent upon pressure, temperature and TDS. The actual volume of product water and rejection percentage will vary with differences from the test conditions that membrane ratings are based upon.

• These drinking water systems are not intended to be used for the treatment of water that is microbiologically unsafe or of unknown quality.

• Storage tank capacity is dependent on pressure. Example: with a 7 psi precharge, the drawdown volume is 2.16 gal at 60 psi, 1.79 gal at 40 psi for the storage tank shown.

• **This product is manufactured under one or more of the following U.S. patents:** 5,045,197; 5,057,212; 5,221,473

Booster Pump

Raises the water pressure and maintains it at the ideal level for the system to operate at maximum efficiency. Recommended for use on supplies with low pressure or high concentrations of total dissolved solids (TDS). The pump is self-priming and whisper-quiet. It runs on a 24VAC transformer (included) from a standard 120VAC electrical outlet.

System includes: Flexible mounting plate, quick connect fittings and a pressure shut-off switch.

Item #: 92325

Model: RO Booster with Pressure Switch and Transformer for 25 to 75 Gallon per day Systems



Economy Reverse Osmosis Drinking Water Systems

Economy RO Model Components

Reverse Osmosis Membrane - allows water molecules to pass while dissolved impurities are flushed to the drain.

Five Micron Pre-Filter - removes tiny particles of suspended dirt and sediment.

Activated Carbon Pre-Filter - protects TFC membrane from chlorine and removes organics.

Activated Carbon Post Filter - removes tastes and odors to give water a final "polish" prior to delivery.

Pressurized Storage Tank - holds purified drinking and cooking water ready for use.

Chrome Plated Faucet - mounts attractively on sink or counter to deliver pure water at the touch of a lever.

Economy RO Booster Pump Model Specific Components

Booster Pump - raises and maintains the water pressure at the optimum level to ensure the highest TDS rejection rate with maximum production.

Product Water Pressure Switch - shuts off system when pressure tank has been filled.

Feed Water Pressure Switch - protects pump against run dry situations.

All models include:

3/8" outlet tubing for higher flows, thin film composite (TFC) membranes, quick connect fittings for easy installation and servicing, heavy duty powder coated bracket, stainless steel product water check valve, automatic shut-off valve, storage tank and under counter installation kit.

The performance of a reverse osmosis membrane is highly dependent upon pressure, temperature and TDS. The actual volume of product water and rejection percentage will vary with differences from the test conditions that membrane ratings are based upon. These drinking water systems are not intended to be used for the treatment of water that is microbiologically unsafe or of unknown quality.

Conditions for Use

Source Water Supply Profile		Chemical Parameters	Max mg/L
Community/Private	Chlorinated/Non-Chlorinated	Hardness (CaCO ₃)	<10 gpg / NSF: <350 (< 20 gpg)
Feed Water Pressure*	242 – 690 kPa (35 – 100 psig)	Iron (Fe)	<0.1
Temperature	4° – 38°C (40° – 100°F)	Manganese (Mn)	<0.05
pH Range	3.0 – 11.0	Hydrogen Sulfide (H ₂ S)	0.00
Maximum TDS Level	2000 mg/L	Residual Chlorine (Cl ₂)	<2.0
Turbidity**	<1.0 NTU		
Maximum SDI***	<4.0		

*Pressure regulator is recommended for feed water pressures exceeding 552 kpa (80 psig)
 **Nephelometric Turbidity Unit
 ***Silt Density Index: Value stated in SDI units.

Economy Reverse Osmosis Systems



Model E50TFC-3SF features:

- Reverse osmosis membrane, nominally rated at 50 U.S. gallons per day.
- *Pre-filters*: 10" five (5) micron Sediment Cartridge and 10" Activated Carbon Cartridge
- *Post filter*: 10" Activated Carbon Cartridge
- Non air gap faucet
- Plastic storage tank

Model E75TFC-3SF features:

- Reverse osmosis membrane, nominally rated at 75 U.S. gallons per day.
- *Pre-filters*: 10" five (5) micron Sediment Cartridge and 10" Activated Carbon Cartridge
- *Post filter*: 10" Activated Carbon Cartridge
- Non air gap faucet
- Plastic storage tank

Specifications

Item Number	Model Description	Stages	Sediment Filter	Pre-Filter	Membrane	Post-Filter	Output GPD ⁽¹⁾	Rejection % ⁽²⁾	Storage Tank US Gallons ⁽³⁾
2870	E50TFC-3SF	4	Spun Polypropylene	Activated Carbon	TFC	Activated Carbon	50	up to	3.8
2871	E75TFC-3SF	4	Spun Polypropylene	Activated Carbon	TFC	Activated Carbon	75	99%	3.8

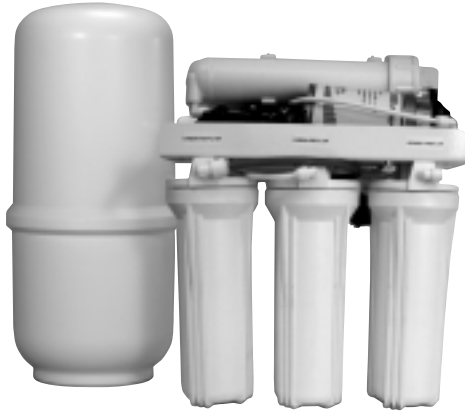
⁽¹⁾Nominal product water ratings are based on the following conditions: Supply TDS of 250 ppm softened tap water, 50 psi (0.36 Mpa), 77°F (25°C), pH 8 and 15% recovery with outlet to atmosphere.

⁽²⁾TDS rejection percentages are dependent on the supply conditions and the substance being measured.

⁽³⁾Storage tank capacity is dependent upon pressure. For example, with a 7 psi precharge, the drawdown volume is 2.16 gallons at 60 psi; 1.79 gallons at 40 psi.

Economy Reverse Osmosis Drinking Water Systems

Economy Reverse Osmosis Systems c/w Booster Pump



Model EBP75TFC-3SF features:

- Reverse osmosis membrane, nominally rated at 75 U.S. gallons per day.
- **Booster Pump:** Mounted on RO to maintain constant water pressure.
- **Pre-filters:** 10" five (5) micron Sediment Cartridge and 10" Activated Carbon Cartridge
- **Post filter:** 10" Activated Carbon Cartridge
- Non air gap faucet
- Plastic storage tank

Specifications

Item Number	Model Description	Stages	Sediment Filter	Pre-Filter	Membrane	Post-Filter	Output GPD ⁽¹⁾	Rejection % ⁽²⁾	Storage Tank US Gallons ⁽³⁾
2876	EBP75TFC-3SF	4	Spun Polypropylene	Activated Carbon	TFC	Activated Carbon	75	up to 99%	3.8

⁽¹⁾Nominal product water ratings are based on the following conditions: Supply TDS of 250 ppm softened tap water, 50 psi (0.36 Mpa), 77°F (25°C), pH 8 and 15% recovery with outlet to atmosphere.

⁽²⁾TDS rejection percentages are dependent on the supply conditions and the substance being measured.

⁽³⁾Storage tank capacity is dependent upon pressure. For example, with a 7 psi precharge, the drawdown volume is 2.16 gallons at 60 psi; 1.79 gallons at 40 psi.

Economy Reverse Osmosis Systems WQA Approved



Model E75TFC-3NSF features:

- WQA Gold Seal tested and certified to NSF/ANSI 58
- Reverse osmosis membrane, nominally rated at 75 U.S. gallons per day
- **Pre-filters:** 10" five (5) micron Sediment Cartridge and 10" Activated Carbon Cartridge
- **Post filter:** 10" Activated Carbon Cartridge
- Non air gap faucet
- Air gap kit
- Plastic storage tank

Model E50TFC-3NSF features:

- WQA Gold Seal tested and certified to NSF/ANSI 58
- Reverse osmosis membrane, nominally rated at 50 U.S. gallons per day
- **Pre-filters:** 10" five (5) micron Sediment Cartridge and 10" Activated Carbon Cartridge
- **Post filter:** 10" Activated Carbon Cartridge
- Non air gap faucet
- Air gap kit
- Plastic storage tank



This model is tested and certified by WQA against NSF/ANSI 58 for the reduction of TDS.



WQA Tested and Certified against CSA B483.1

Specifications

The following Economy Reverse Osmosis Systems conform to NSF/ANSI 58 for the specific performance claims as verified and substantiated by test data.

Item Number	Model Description	Storage Tank	# of Vessels	Storage Tank Capacity Litres (gal)	Vessel 1	Vessel 2	Vessel 3	Vessel 4	Daily Production Rate ⁽²⁾ L/day (G/day)	Efficiency Rating ⁽³⁾ %	Recovery Rating ⁽⁴⁾ %
2885	E50TFC-3NSF	Plastic	4	6 (1.6)	Sediment Filter	Carbon Filter	TFC ⁽¹⁾ Membrane	Carbon Filter	45.4 (12)	8.5	17.5
2886	E75TFC-3NSF	Plastic	4	8.7 (2.3)	Sediment Filter	Carbon Filter	TFC ⁽¹⁾ Membrane	Carbon Filter	100 (26.4)	14.5	25.8

⁽¹⁾ TFC refers to reverse osmosis membranes constructed from a THIN FILM COMPOSITE

⁽²⁾ The daily production rate is the volume of product water produced by the system per day and is determined by testing in accordance with the procedure outlined in NSF/ANSI Standard 58.

⁽³⁾ System's Efficiency rating as verified by testing in accordance with NSF/ANSI standard 58. Efficiency rating means the percentage of the influent water to the system that is available to the user as reverse osmosis treated water under operating conditions that approximate typical daily usage.

⁽⁴⁾ System's Recovery rating as verified by testing in accordance with NSF/ANSI Standard 58. System's Recovery rating means the percentage of the influent water to the membrane portion of the system that is available to the user as reverse osmosis treated water when the system is operated without a storage tank or when the storage tank is bypassed.

*PRESSURE REGULATOR IS RECOMMENDED FOR FEED WATER PRESSURES EXCEEDING 552 kPa (80 psig)

Ultra 2 Under Sink Filter System

- Ideal for home, farm or cottage use on microbiologically safe water supplies.
- Filters sediment, rust and unpleasant tastes and odors.
- Reduces levels of chlorine and sediment down to 0.5 micron.
- Easy do-it-yourself installation.
- Includes attractive chrome plated faucet.
- Cheaper and more convenient than bottled water.

Ultra 2 Under Sink Filter System

No. 26117

Replacement Cartridges

No. 26118

0.5 Micron Carbon Briquette Cartridge

No. 26006

Superior Taste Cartridge

Chrome Long Reach Faucet

No. 87511



Aquatec - Reverse Osmosis Booster Pumps

Aquatec booster pumps are available for reverse osmosis system installations on low pressure water supplies. A booster pump raises and maintains the water pressure to the optimum level to ensure the highest rejection rate and maximum production.

Distinguishing Features

- Toughest, most durable pump on the market
- Adjustable maximum outlet psi (regardless of feed pressure)
- Expels trapped air (no more air locks)
- Can be mounted w/pump head up or down
- More flow at extremely low inlet pressures
- New motor venting system to remove moisture
- EMI/RFI electronic noise suppression
- 100% final performance tested
- **1 year limited warranty against manufacturing defects**

Item # 92287 Aquatec Model CDP 6800 Series Booster Pump Package

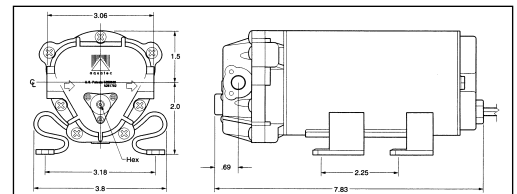
- complete with PSW Shutoff Switch and 115V Transformer • suitable for R.O. Systems rated up to 50 GPD



Key Operating Benefits:

- Maximum Pump Pressure - 120 PSI (827 kPa)
- Maximum Inlet Pressure - 40 PSI (275 kPa)
- Used with membranes 9 to 50 GPD
- Up to 30,000+ operating hours (estimated)
- Can run dry without damage
- Self priming - 60" lift
- Low voltage (12-24V) motor for maximum safety
- Corrosion resistant exterior
- Continuous or intermittent operation
- Supplied with 3/8" PSW Tank Shut-off switch

- Quiet - less than 45 DBA
- Pump inlet/outlet 1/4" QC
- Flexible mounting plate



CDP 6800 Dimensional Specifications

Item # 92317 Aquatec Model CDP 8800 Series Booster Pump Package

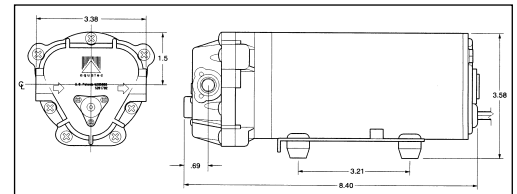
- complete with PSW Shutoff Switch and 115V Transformer • suitable for R.O. Systems rated up to 120 GPD.

Item # 92317-1 Aquatec Model CDP 8800 Package with 3/8" x 1/4" Connectors and Tubing



Key Operating Benefits:

- Maximum Pump Pressure - 120 PSI (827 kPa)
- Maximum Inlet Pressure - 40 PSI (275 kPa)
- Used with membranes 50 to 100 GPD
- Up to 15,000+ operating hours (estimated)
- Can run dry without damage
- Self-priming - 60" lift
- Low voltage (12-24V) motor for maximum safety
- Corrosion resistant exterior
- Continuous or intermittent operation
- Supplied with 3/8" PSW tank shut-off switch



CDP 8800 Dimensional Specifications

- Quiet - less than 52 DBA
- Pump inlet/outlet 3/8" QC
- Flexible mounting plate

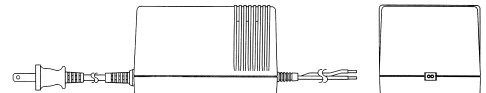
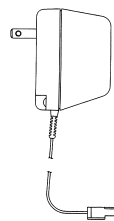
Accessories



Item # 92318:
3/8" PSW Tank Shut-off Switch



Item #92319:
CDP 6800 Transformer



Item #92323:
CDP 8800 Transformer

Kemflo - Reverse Osmosis Booster Pumps

Item #92325



The Kemflo Reverse Osmosis Booster Pump can be used with the 1240 Series Reverse Osmosis systems from 9 to 75 GPD to provide increased pressure to the inlet of the system for increased production and higher quality water. The pump provides virtually noise free operation.

1 Year Limited Warranty against manufacturing defects

Nominal Maximum Flow Rate = 1.0 LPM (0.26 USGPM)
Maximum Pump Pressure = 758 kPa (110 PSI)
Maximum Inlet Pressure = 275 kPa (40 PSI)
Ambient Temperature Limits = 5 to 35°C (40 to 90°F)
Voltage = 24VDC

Pump comes complete with:

- 120VAC to 24VDC Class 2 Transformer, UL Approved for the US and Canada
- Pressure Switch with 3/8" QC Fittings (preset @ 40 PSI)
- Pump inlet / outlet with 1/4" QC Fittings
- Vibration Dampening Motor Mount



Item #92342
3/8" HP1000 Kemflo Pressure Switch



Item #92344
Kemflo Transformer

Aquatec - Reverse Osmosis Demand Pumps

Item # 92341



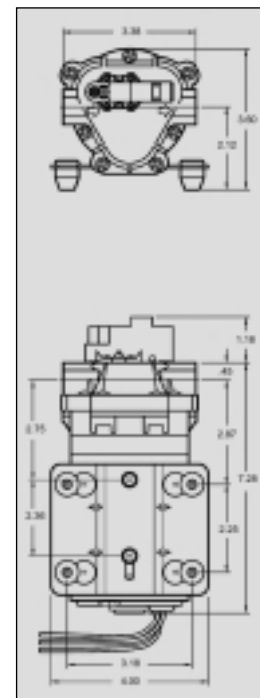
Aquatec DDP 5800 Series Delivery/Demand Pump Package

- complete with internal on/off pressure switch
- 115V/60 Hz
- Pressure regulated to approximately 60 psi at 1 GPM
- Pump inlet/outlet 3/8"

Key Operating Benefits:

- 0.25 to 1.5 GPM (5 lpm) flow
- Adjustable switch and bypass settings
- 7 year design life (estimated)
- Minimal pulsations
- Self priming
- Chemically resistant versions
- Up to 130 psi (9 bars) pressure
- Auto purging
- Highly efficient
- Whisper quiet at lower flows
- Can run dry without damage

1 Year Limited Warranty against manufacturing defects



Leak Controller

The first line of defense against water damage.

Leak Controller detects the water spill on the surface and engages a shut-off valve to cut-off the water supply. It also sounds an alarm to alert the customer until the valve is manually reset. By preventing the continuous water flow, equipment and property damage are restricted and the user liability is reduced.

It can be connected to the water purification system, POU coolers, refrigerators, ice makers etc.

Features

- Available valve to tubing connection sizes: 1/4" for plastic and copper tubing
- LeakLogic™ RISC based management - *state of the art microchip technology for sensitive controls, operation verification and long battery life*
- Status test button
- Audio and LED status indicator
- Audio alarm
- Powered by 4 "AA" batteries - *no external electrical connections required*
- Pull-out battery holder for convenient battery replacement
- Programmable service reminder
- NSF approved automatic ball valve shut-off and plastic tubing
- Two screw mounting plate allows for quick and simple installation
- Sensor towel
- Built with superior impact resistant ABS plastic
- One sensor included with coin test slot and series connectors
- Built with reinforced nylon and glass materials on stressed components
- Water detection sensitivity down to 2 ppm TDS (Total Dissolved Solids)
- Programmable service reminder indicator
- Conformal coating on the printed circuit board
- **One Year Limited Warranty** from date of purchase against defects in material and workmanship



Item #92434

Specifications

Power	4 "AA" size alkaline type batteries
Sensor	Electromechanical dual probe with series connectors
Temperature	System operating range: 40° to 100°F (4° to 37°C) Water operating range: 36° to 140°F (2° to 60°C)
Size (H x W x D)	6.75 x 3.25 x 2.5" (171 x 83 x 64 mm)
Weight	0.9 lbs (0.4 kg) with batteries
Solenoid	6V DC Push-Type
Alarm	85+dB at 5' @ 3.4 ± 0.5 kHz pulsing alarm
LED	Blue
Mounting	Accessories and bracket supplied for wall mounting
Battery Replacement	Replace annually or upon low battery indicator

- This product does not guarantee the prevention of water damage.
- Many factors increase the probability of preventing water damage including: Constant Leak Controller testing / Physical verification of all parts / Correct placement of the sensor(s)

Designer Faucets

The Tomlinson Designer RO Faucet comes in 9 beautiful finishes to match today's designer kitchens. This lead-free designer faucet retrofits to most brands and is an excellent upgrade from basic faucets that come with most RO and other Filter Systems.



Features

- Combines quality and style with up-sell appeal
- Retrofits most brands
- Smooth operating ceramic disk element
- Lever style handle
- Standard finish is highly polished chrome; nine other designer finishes available
- High reach neck design of 12" (305 mm); optional shorter neck also available
- Neck swivels easily, 360°
- Unique protective spout tip prevents after drip
- Modular air gap (patent pending)
- Base diameter is 2-1/4" (57 mm)
- Preinstalled tubing for quick connections
- Mounting hardware included
- NSF listed to ANSI NSF Std. 61-1999a
- Two-year warranty

Specifications

Item Number	Model Description
87540	Designer Air Gap RO Faucet, Polished Chrome
87541	Designer Air Gap RO Faucet, Satin Nickel
87542	Designer Air Gap RO Faucet, White
87543	Designer Air Gap RO Faucet, Biscuit
87544	Designer Air Gap RO Faucet, Black
87545	Designer Air Gap RO Faucet, Polished Brass
87546	Designer Air Gap RO Faucet, Antique Bronze
87547	Designer Air Gap RO Faucet, Bright Nickel
87548	Designer Air Gap RO Faucet, Brushed Stainless Finish

Spout Reach: 5" (127 mm)

Overall Height: 12" (305 mm)


Pressure Rating: 125 PSI / 8.3 BAR

Flow Rate at 35 PSI / 2.32 BAR: 1.0 gpm (3.785 lpm)

Temperature Rating: 40°F / 4°C to 150°F / 66°C

Mounting Hole Diameter: Without air gap: 1/2"
With air gap: 7/8"

Max. Mounting Surface Thickness: Without air gap: 2-3/8"
With air gap: 1"

 The Designer RO Faucet is NSF listed to ANSI Std. 61-1999A.

The Tomlinson Contemporary RO Faucet comes in four fabulous finishes which add high style to the high-end kitchen.



Features

- Elegant design complements today's high-end kitchens
- Retrofits most brands
- Lever style handle
- Protective spout tip design prevents after-drip
- Patented modular air gap (US patent #7,011,106)
- Internal ceramic disc provides smooth operation
- High reach neck of 12" (305 mm); swivels easily, 360°
- Pre-installed tubing allows for quick connections
- All mounting hardware is included
- NSF listed to ANSI NSF Std. 61
- Two-year warranty

Specifications

Item Number	Model Description
87551	Designer Air Gap RO Faucet, Polished Chrome
87552	Designer Air Gap RO Faucet, Satin Nickel
87553	Designer Air Gap RO Faucet, Antique Bronze
87554	Designer Air Gap RO Faucet, Brushed Stainless Finish

Spout Reach: 5" (127 mm)

Overall Height: 12" (305 mm)

Pressure Rating: 125 PSI / 8.3 BAR

Flow Rate at 35 PSI / 2.32 BAR: 1.0 gpm (3.785 lpm)

Temperature Rating: 40°F / 4°C to 150°F / 66°C

Mounting Hole Diameter: Without air gap: 1/2" min, 1-1/8" max
With air gap 7/8" min; 1-1/8" max

Max. Mounting Surface Thickness: Without air gap: 2-3/8"
With air gap: 1"



The Designer RO Faucet is NSF listed to ANSI Std. 61.

Options

Designer RO Display Kit #87550

- Displays your choice of 4 Designer RO Faucets in under 12" of space.
- Attractive marble-like base highlights faucet finishes.
- Easy to assemble.
- Completely portable.



Designer RO Faucets sold separately

Value Faucets

The Value Faucets are the best alternative to upgrade the existing basic faucets in your home. The Value Faucets are a unique quarter turn faucet that comes in two designs and six different finishes. These faucets are NSF approved and are lead-free.

Features:

- Elegant design complements today's high-end kitchens
- NSF listed to ANSI NSF Std. 61 and is lead free
- Retrofits most brands
- Internal ceramic disc provides smooth operation
- High Neck Design which swivels 360°
- Lever style quarter turn handle
- All mounting hardware is included
- Available in two designs, six different finishes
- Two-year warranty



These faucets are NSF 61 approved and are lead-free.

Series 888 Specifications

- Overall Height of 11.5" (292 mm)
- Swivels Easily, 360°
- Spout Reach: 5.7" (146 mm)
- Mounting Hole Diameter: 1/2" (12.5 mm)
- Base Diameter: 1.73" (44 mm)
- Connection*: 1/4" compression nut fitting
- Operating pressure: 125 psi/8.3 bar
- Flow Rate: 1.0 gpm/3.785 lpm at 35 PSI/2.32 BAR
- Temperature Rating: 4°C/40°F to 70°C/158°F

Series 905 Specifications

- Overall Height of 11.075" (281.32 mm)
- Swivels Easily, 360°
- Spout Reach: 4.75" (120 mm)
- Mounting Hole Diameter: 1/2" (12.5 mm)
- Base Diameter: 1.76" (44.8 mm)
- Connection*: 1/4" compression nut fitting
- Operating pressure: 125 psi/8.3 bar
- Flow Rate: 1.0 gpm/3.785 lpm at 35 PSI/2.32 BAR
- Temperature Rating: 4°C/40°F to 70°C/158°F



Item #	Description	Item #	Description
Series 888		Series 905	
87580	Faucet, Polished Chrome	87582	Faucet, Polished Chrome
87581	Faucet, Brushed Nickel	87583	Faucet, Brushed Nickel
87584	Faucet, Black	87586	Faucet, Satin Nickel
87585	Faucet, Satin Nickel	87587	Faucet, Oil Rubbed Bronze
87588	Faucet, Antique Brass		
87589	Faucet, Antique Wine		

* The standard faucets come with 1/4" compression nut fitting. The 3/8" quick connect faucet adapter fitting (#92407) can be purchased separately.

PURA® Point-of-Use Coolers

The **PURA COOL** is an economical bottle-free cooler product. The treatment system is mounted remotely and the cooler provides hot and cold filtered drinking water in a basic yet sturdy platform.

Features

- Hot and Cold dispensing spigots
- Hot water safety lock to prevent accidental dispensing
- Dual float shut-off for safety
- Both remotely mounted filtration or reverse osmosis options
- Meets UL and CSA requirements



The **PURA MAX** bottle-free cooler is a product with a modern look and feel suitable for business and homes, but without the added ultraviolet option of the Max Plus model.

Features

- Modern look with metallic finish matches any décor particularly in office environments
- 1 gallon stainless steel cold tank
- Hot and Cold dispensing spigots
- Hot water safety lock to prevent accidental dispensing
- Lower cabinet is large enough to mount either a filtration cartridge package or a reverse osmosis system
- Meets UL and CSA requirements



The **PURA MAX PLUS** includes a system which re-circulates water from the cold reservoir past an ultraviolet sterilization lamp for continual sanitization. This Max Plus has a modern look and feel that is suitable for both business and home environments.

Features

- Modern look with metallic finish matches any décor particularly in office environments
- Re-circulating ultraviolet sanitization provides peace of mind
- 1 gallon stainless steel cold tank
- Hot and Cold dispensing spigots
- Hot water safety lock to prevent accidental dispensing
- Lower cabinet is large enough to mount either a filtration cartridge package or a reverse osmosis system
- Meets UL and CSA requirements



With advanced features such as “in tank” UV Sanitization and BioCote® to inhibit biological growth, the **PURA ULTIMATE** provides an endless supply of water with safety and security. The Ultimate modern and yet robust appeal and function is perfect for installation in all applications.

Features

- Three water temperature settings meets everyone’s needs
- In tank ultraviolet sanitization lamp maintains water quality in the cold tank
- Lower cabinet mounts either filtration or reverse osmosis equipment
- BioCote® Technology protects from bacterial growth on exterior
- Leak detection and automatic shut-off prevent water damage
- Large 1 gallon cold tank
- 9” high filling height for pitchers
- Adjustable levelling feet



PURA® Point-of-Use Coolers



PURA Point-of-Use Coolers produce bottle quality water.

- UV Light - Without harmful chemicals, ultraviolet light sanitizes water to protect you from bacteria.
- BioCote® - A new technology offering antimicrobial protection against the fungi, mold, and bacteria to reduce unpleasant odors.
- Activated Carbon Filtering - reduces chlorine taste and odor.
- Sediment Filtering - reduces turbidity and sediments.
- Reverse Osmosis - WaterGroup's 1240 Series reverse osmosis technology reduces total dissolved solids in the water.



Specifications

Model	Cold Tank Capacity usgal (L)	Hot Tank Capacity usgal (L)	Electrical	Dimensions H x W x D inches (mm)	Water Connection	Dispensing Area Height inches (mm)
PURA Cool	1.2 (4.5)	0.9 (3.5)	120V/60Hz/6.2A	39x12x12 (980x312x314)	1/4" tube	7.75 (197)
PURA Max	0.9 (3.5)	0.4 (1.5)	120V/60Hz/4.7A	42x13x15 (1060x330x380)	1/4" tube	7.5 (190)
PURA Max Plus	0.9 (3.5)	0.4 (1.5)	120V/60Hz/4.7A	42x13x15 (1060x330x380)	1/4" tube	7.5 (190)
PURA Ultimate	1.2 (4.5)	0.4 (1.5)	120V/60Hz/6.2A	46x16x15 (1160x410x380)	1/4" tube	9.0 (228)

Model	Removable Drip Tray	Cold Water	Hot Water	Room Temp. Water	Reserve Storage Tank usgal (L)	Leak Detection	UV Protection	BioCote	NSF 61	Filtration	Reverse Osmosis
PURA Cool	✓	✓	✓	—	—	—	—	—	—	Remote	Remote
PURA Max	✓	✓	✓	—	—	✓	—	—	—	✓	✓
PURA Max Plus	✓	✓	✓	—	—	✓	✓	—	—	✓	✓
PURA Ultimate	✓	✓	✓	✓	3 (11)	✓	✓	✓	✓	✓	✓

Electrical: 120V/60Hz Grounded North American electrical outlet
 Inlet Water Pressure: 40 - 60 psi (275-414 kPa) Recommended / 100 psi (862 kPa) Maximum
 Inlet Water Temperature: 40 - 100°F (4 - 38°C)
 Drain Connection: Required for coolers equipped with reverse osmosis

Source Water Supply Profile

	Municipal/Private	Chlorinated/Non-Chlorinated	pH Range	Maximum TDS	Turbidity	Maximum SDI	Hardness	Iron (Fe)	Manganese (Mn)	Hydrogen Sulphide (H2S)	Residual Chlorine (Cl)
Filtration Equipped Coolers	both	both	3.0-11.0	<500 mg/L recommended	<1.0 NTU	—	<350 mg/L (<20gpg)	<0.1 mg/L	<0.05 mg/L	<0.0 mg/L	<0.0 mg/L
Reverse Osmosis Equipped Coolers	both	both	3.0-11.0	<500 mg/L recommended	<1.0 NTU	<4.0	<350 mg/L (<20gpg)	<0.1 mg/L	<0.05 mg/L	<2.0 mg/L	<2.0 mg/L

Remote Water Chiller

Stylish and unique water chiller that fits discretely under the kitchen sink...ready to plug in!

- Provides perfectly chilled drinking water at 39 - 42°F (4 - 6°C)
- All stainless steel waterways to use with RO system
- White powder coated galvanized steel cabinet with light gray plastic fascia
- Easy to install with quick-connect fittings
- Four foot insulated power cord with NEMA 5-15 plug-ready to plug in
- Adjustable water temperature control
- One gallon per hour cooling capacity; stainless steel storage tank
- Air cooled; no cabinet venting required
- Includes four feet of 1/4" diameter tubing, two quick-connect fittings, wall mounting clips and screws, instruction manual
- NSF approved



Cabinet: Powder coated galvanized steel cabinet with plastic front.

Cold Water Refrigeration Unit: Convection-cooled condenser. Internally spring mounted, hermetically sealed compressor with automatic overload protector. No lubrication needed. Refrigerant is controlled accurately by capillary tube. Air-cooled; designed to fit under a cabinet.

Cold Water Thermostat: Temperature is controlled by an adjustable thermostat with "OFF" position that is easily accessible on the front of the cabinet.

Cold Water Reservoir: Evaporator is made of copper tube on stainless steel water tank and both are encapsulated in insulation.

Capacity: 1 GPH cooling capacity.

Electrical: 115 volts, 60 Hz. Water cooler compressor hp 1/20. Insulated power cord with NEMA 5-15 polarized plug.

Limited One Year Warranty: One year on the sealed refrigeration system and most component parts. Detailed warranty certificate enclosed with each water cooler; sample copy available upon request.

Specifications

Item Number	Model Description	Cooling Capacity ¹ GPH (LPH)	115 volts, 60Hz		Dimensions W x D x H Inches	Net Weight Lbs.
			Full Load Amps	Rated Watts		
2878	R1P	1.0 (3.8)	1.3	135	10-5/16 x 8-3/4 x 14-5/8	30

¹Capacity is at industry standard rating conditions of 50°F (10°C) outlet water, 80°F (26.7°C) inlet water and 90°F (32.2°C) ambient air.

- Model covered by this specification complies with all known Plumbing Codes. Listed by Underwriters Laboratories Inc.
- Components in this cooler are lead free as defined by the safe Drinking Water Act Amendments of 1986, and the Lead Contamination Control Act of 1988.
- Drinking water cooler is Certified to NSF/ANSI 61.
- All specifications subject to change without notice.



Certified to
NSF / ANSI 61 / Section 9



Manufactured by Tri Palm International, LLC
Cienega De Flores, Mexico