

KOHLER® Roughing-In

K-2075 SERIF® COUNTERTOP BATHROOM SINK

Product Information

Applicable product:	
Single-hole bathroom sink	K-2075-1
4" (102 mm) centers bathroom sink	K-2075-4
8" (203 mm) centers bathroom sink	K-2075-8

Fixture*:	Basin area	Water depth
Bathroom sink	16-7/8" (429 mm) x 10-1/8" (256 mm)	4-7/8" (123 mm)
Drain hole	Ø 1-3/4" (44 mm)	
* Approximate measurements for comparison only.		

Holes	K-2075-8	K-2075-4	K-2075-1
Spout	Ø 1-3/16 (30 mm)	1-3/16" (30 mm)	1-3/8" (35 mm)
Faucet	1-3/8" (35 mm)	1-3/16" (30 mm)	

Included Components:	
Cut-out template	1014189-7

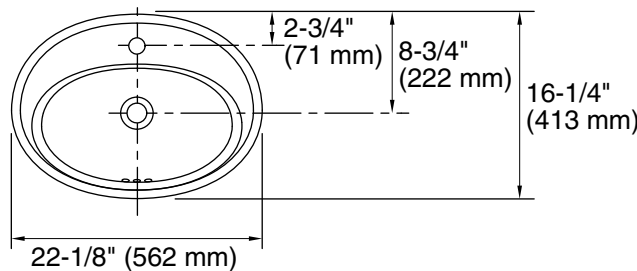
Installation Notes

Install this product according to the installation guide.

NOTICE: Countertop manufacturer or cutter **must** use the cut-out template provided with the product, or a current one provided by Kohler Co. (call 1-800-4-KOHLER). Kohler Co. is not responsible for cutout errors when the incorrect cut-out template is used.

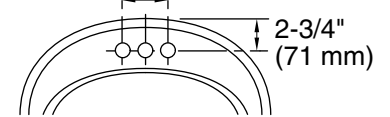
Fixture conforms to ASME Standard A112.19.2/CSA B45.1. All dimensions are nominal.

K-2075-1



K-2075-4

4" (102 mm)



K-2075-8

4" (102 mm)

